



TRONIC DC M45 50/12



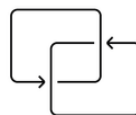
Compatible con
panel solar



Built-in
battery



Mechanical limit
switch



Two-way
protocol



Radio control

50Nm MOTOR + battery with two-way radio receiver

This pack includes a 12V motor and an external battery with a built-in two-way radio receiver. For added convenience and sustainability, a solar panel can be optionally added, allowing the battery to be charged using renewable energy, eliminating the need for frequent recharging and connection to the mains.

REFERENCES



Ø45mm | 50/12 70.045.050 DC



BATTERY WITH RADIO RECEIVER | 70.325.100.1

Motor + Battery Pack with receiver.

Mechanical limit switch with progressive regulation by rod.

The battery includes a two-way radio receiver.

Head with 12mm central hole for mounting on monoblock drawer.

For axles with 50, 56, 60, 70, 78 and 92mm diameter.

With an autonomy of up to 12 months and without the need for electrical installation.

TECHNICAL CHARACTERISTICS OF THE MOTOR

Par-nominal	Speed	Feeding	Nominal power	Amperage	Working time	Max laps	Degree of protection	Length measurement	Max Weight
50 Nm	12 rpm	12 V D.C	142 W	11,8 A	6 min	22	IP 44	660mm	80 Kg

TECHNICAL CHARACTERISTICS OF THE BATTERY

Voltage	Amperage	Power	Frequency	Length measurement	working temperature	Degree of protection
12v D.C.	5.2 Ah	56.16 Wh	433.92	580mm	-4°C a 40°C	IP 44

BATTERY CHARGING OPTIONS

1. Charger



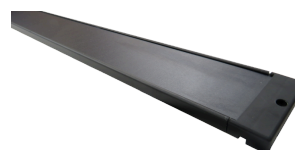
The battery has a lifespan of approximately 12 months. At the end of this period, you must charge the battery using a charger connected directly to the connection cable.

2. Charger + Connector for extension of roller shutter box



This option includes a hose for installation in a monoblock box, which is aesthetically pleasing and only needs to be used once every 12 months.

3. Panel solar

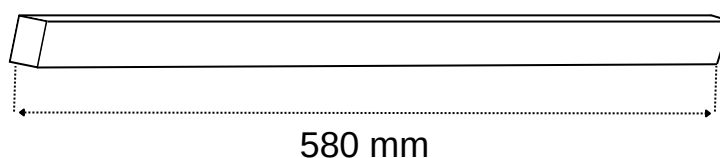


By using a solar panel, the need to manually charge the motor battery is eliminated. Not only is it the most sustainable option, but also the most convenient and long-lasting.

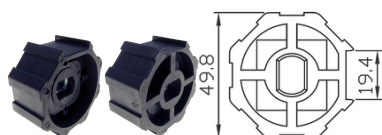
ENGINE MEASUREMENTS



BATTERY MEASUREMENTS



ACCESSORIES:



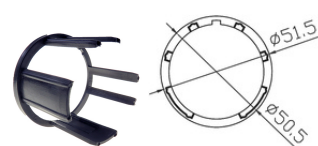
50 octagonal pulley | 61.005.010



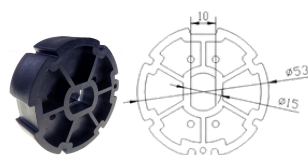
Corona 50 octagonal | 61.005.110



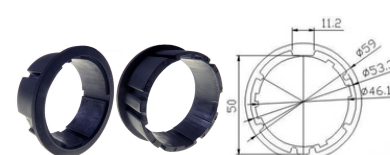
DEPRAT 54 octagonal pulley | 61.005.099



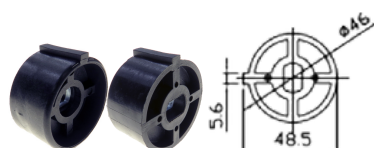
Corona 54 octagonal DEPRAT | 61.005.098



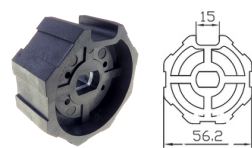
Pulley 56 | 61.005.003



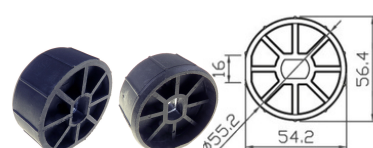
Corona 56 | 61.005.103



reinforced pulley 58 | 61.005.008



60 octagonal pulley | 61.005.011



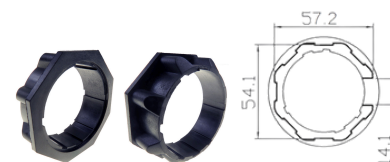
Pulley 60 round | 61.005.012



reinforced octagonal pulley 60 | 40.005.011



Corona 60 octagonal | 61.005.111



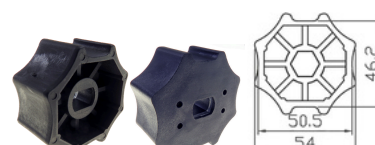
Reinforced octagonal crown 60 | 40.005.111



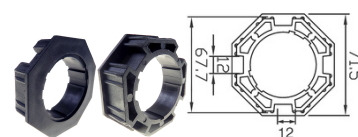
Crown 60 curly | 61.005.104



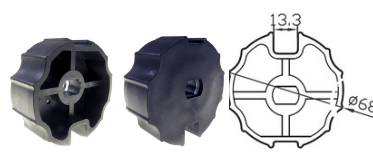
Crown 60 round | 61.005.112



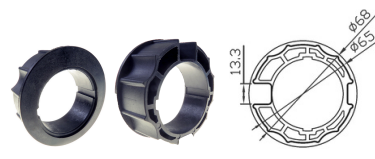
Pulley 60 curled | 61.005.004



Corona 70 octagonal | 61.005.106

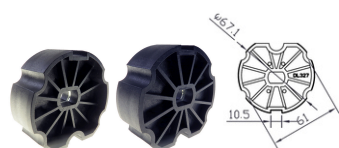


Pulley 70 offset warhead | 61.005.005



Crown 70 off-centered ogive | 61.005.105

ACCESSORIES:



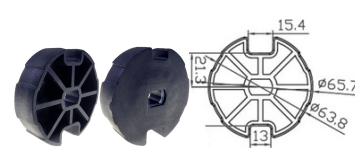
**Pulley 70 BAT
warhead**

61.005.029



**Corona 70 BAT
warhead**

61.005.129



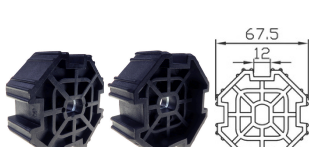
**Pulley 70 centered
warhead**

61.005.014



Crown 70 centered ogive

61.005.114



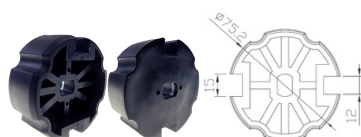
70 octagonal pulley

61.005.006



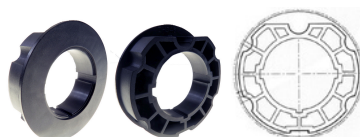
**Crown 78
Warhead**

61.005.107



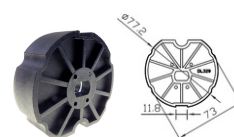
**Pulley 78
Warhead**

61.005.007



**Corona 80 BAT
warhead**

61.005.130



**Pulley 80 BAT
warhead**

61.005.030

MOUNTING BRACKETS:



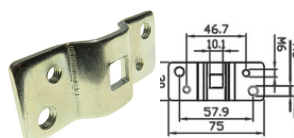
**M45 DRAWER SUPPORT ROUND
HEAD**

60.004.061



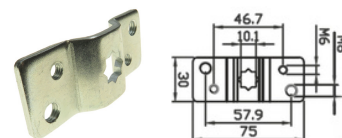
**METAL PLATE FOR THE ROUND HEAD
DRAWER SUPPORT**

60.004.062



**45MM 2 AG CONSTRUCTION
SUPPORT.**

60.004.006



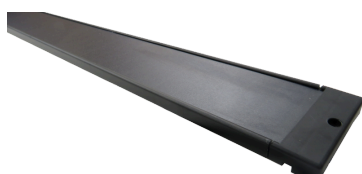
45MM STAR CONSTRUCTION SUPPORT

60.004.005

COMPATIBLE WITH:



**Charger 12v
BD.325.200**



**Panel solar
70.325.100.20**



**Blind box
extension
connector
BD.325.001**

COMPATIBLE CON:



KUMO WAVE
BD.100.001



KIK1
BD.003.101



KIK15
BD.003.115



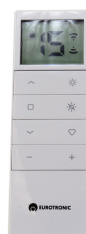
KIKWALL
90.003.101



KIKWALL15
90.003.115



**NOX SOLAR
WEATHER VANE**
BD.002.124



KIK SUN
BD.003.115SUN

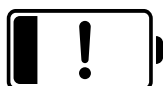


KIK MOVE
BD.001.125

SAFETY WARNINGS



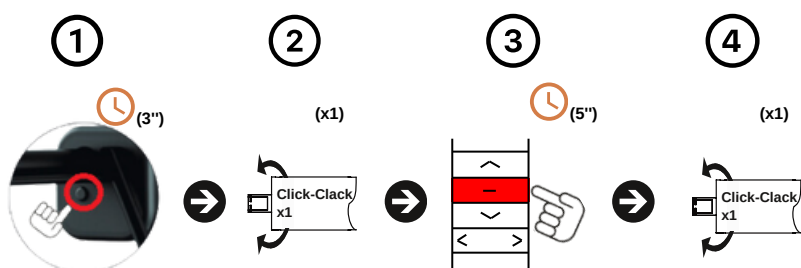
⚠ Warning: Do not install the battery in a place where it may receive direct sunlight. Prolonged exposure to the sun may cause overheating, reduced battery life, and even safety hazards. Always install the battery in a cool, dry place protected from the sun.



⚠ Warning: Please fully charge the motor for 8 hours before first use. Proper initial charging is essential to ensure optimal performance and battery life.

INSTRUCTIONS:

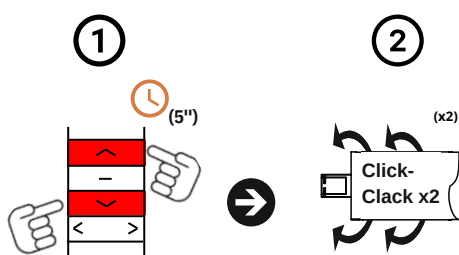
1. LINK FIRST TRANSMITTER



Procedure:

1. Press the battery programming button for 3 seconds (3").
2. The motor will make a "CLICK-CLACK" sound (x1).
3. Press (STOP) on the remote control to record for five seconds.
4. The motor will make a "CLICK-CLACK" sound (x1).

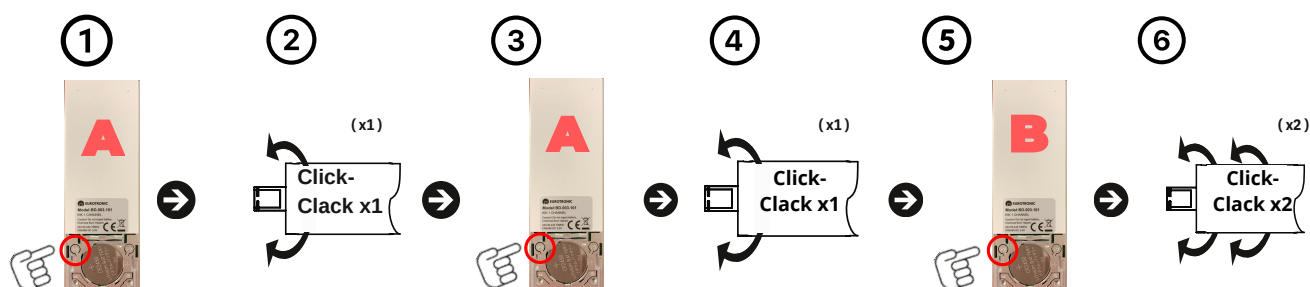
2. CHANGE OF ADDRESS



Procedure:

1. Press the up and down buttons on the remote control at the same time for 5 seconds (5").
2. The motor will make two "CLICK-CLACK" sounds (x2).

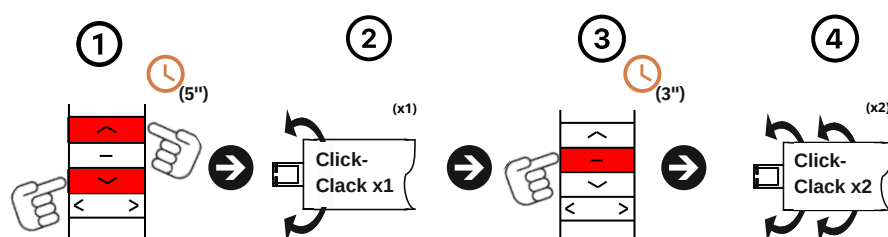
3. LINK/REMOVE AN ADDITIONAL TRANSMITTER



Procedure:

1. Press the button (P2) located behind the already linked transmitter (A).
2. The motor will make a CLICK-CLACK (x1) and a beep (x1).
3. We will press the button (P2) of the same transmitter (A) again.
4. The motor will make a "CLICK-CLACK" sound (x1) and a beep sound (x1).
5. Then press the (P2) button on the new transmitter (B) to confirm.
6. The motor will make two "CLICK-CLACK" sounds (x2) and three beeps (x3).

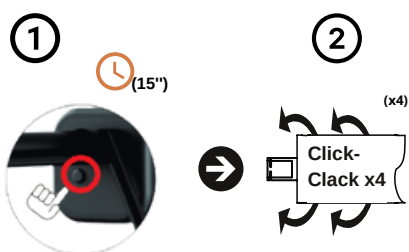
4. ACTIVATE/DEACTIVATE PULSE MOVEMENT



Procedure:

1. Press the transmitter's (UP + DOWN) buttons at the same time for five seconds (5").
 2. The motor will make a "CLICK-CLACK" sound (x1) and a beep sound (x1).
 3. Press the (STOP) button once (x1) to confirm.
- If the motor makes a "CLICK-CLACK" (x1) and a long beep (x1) it will be in pulse mode.
 - If the motor makes (x2) CLICK-CLACK and three beeps (x3) it will be in continuous mode.

5. DELETE ALL TRANSMITTERS / FACTORY MODE



Procedure:

1. Press the battery programming button for 15 seconds (15").
2. The motor will make 4 "CLICK-CLACK" sounds (x4) and four beeps (x4).



www.eurotronic-europe.com

C/Pica d'Estats, 108-118 Poligono Industrial Sant Isidre
08272 Sant Fruitós de Bages (Barcelona) SPAIN

pedidos@eurotronic-europe.com Tel: +34 932 420 108